





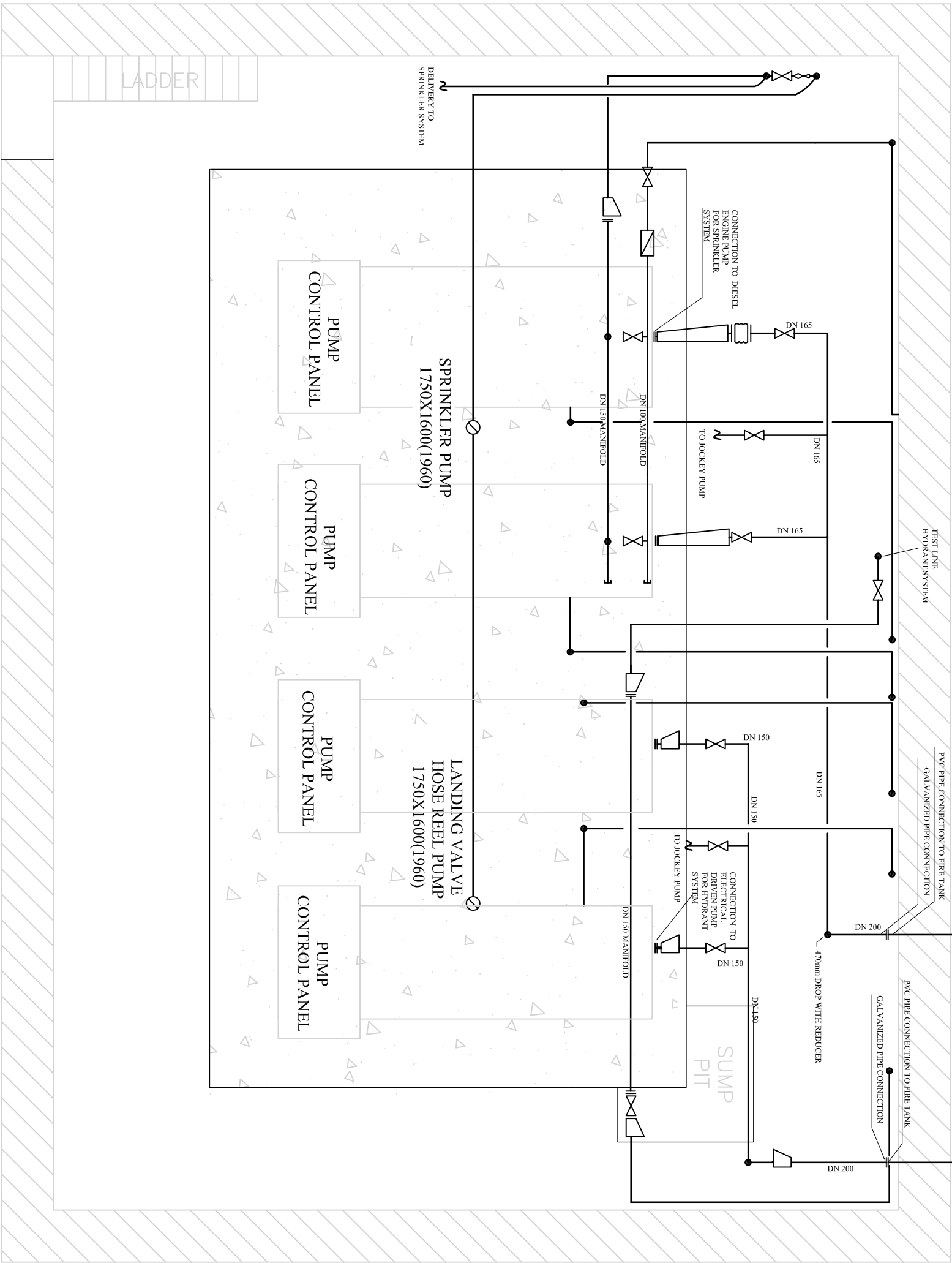
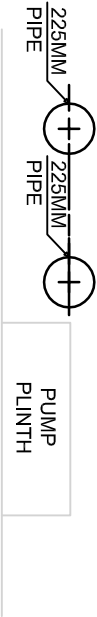


LEGEND:FOR FIRE PUMP ROOM:

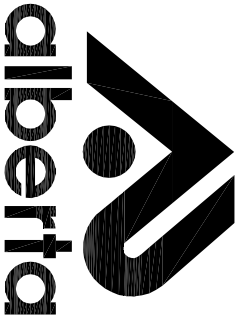
-  ISOLATING VALVE
-  FLEXIBLE JOINT
-  ECCENTRIC REDUCER (INSTALLED TOP FLAT)
-  FIRE FIGHTING PIPEWORK CHANGE IN LEVEL
-  FLANGED CONNECTION
-  FLOW METER

NOTES

1. FINISHED LEVEL OF PUMP PLINTH SHALL BE LEVEL WITH SUCTION LINE (225MM) CENTER LINE .
2. VENTILATION ARRANGEMENTS TO BE ADDED IN SUBSEQUENT REVISIONS FOLLOWING ADDITIONAL CLARIFICATIONS.
3. FOR CONNECTION PIPE WORK SEE DRAWING S047/12/FF-010.



JOB TITLE:		STERLING S.N.I.F.F – HAL FAR	
JOB NO.:		15239	
DRAWING TITLE:		FIRE FIGHTING PUMP ROOM BUILDERS WORK	
DETAILED DESIGN DRAWING ISSUED BY: ALBERTA			
INSTALLATION DRAWING			
DESIGNED BY: SANDRO ATTARD	SCALE: 1 : 20 (A3)		
DRAWN BY: JOSEPH VISHAL	DATE: 28 FEB 13		
CHECKED BY: SANDRO ATTARD	DRAWING NO.: S047/13/FF-D01	REV: 0	



Alberta, San Gwarkin Rd, Mriehel, BKR 3000, Malta
Website : www.alberta.com.mt
TEL: (+356) 21443538
(+356) 21484358
(+356) 21440420
FAX: (+356) 21484077